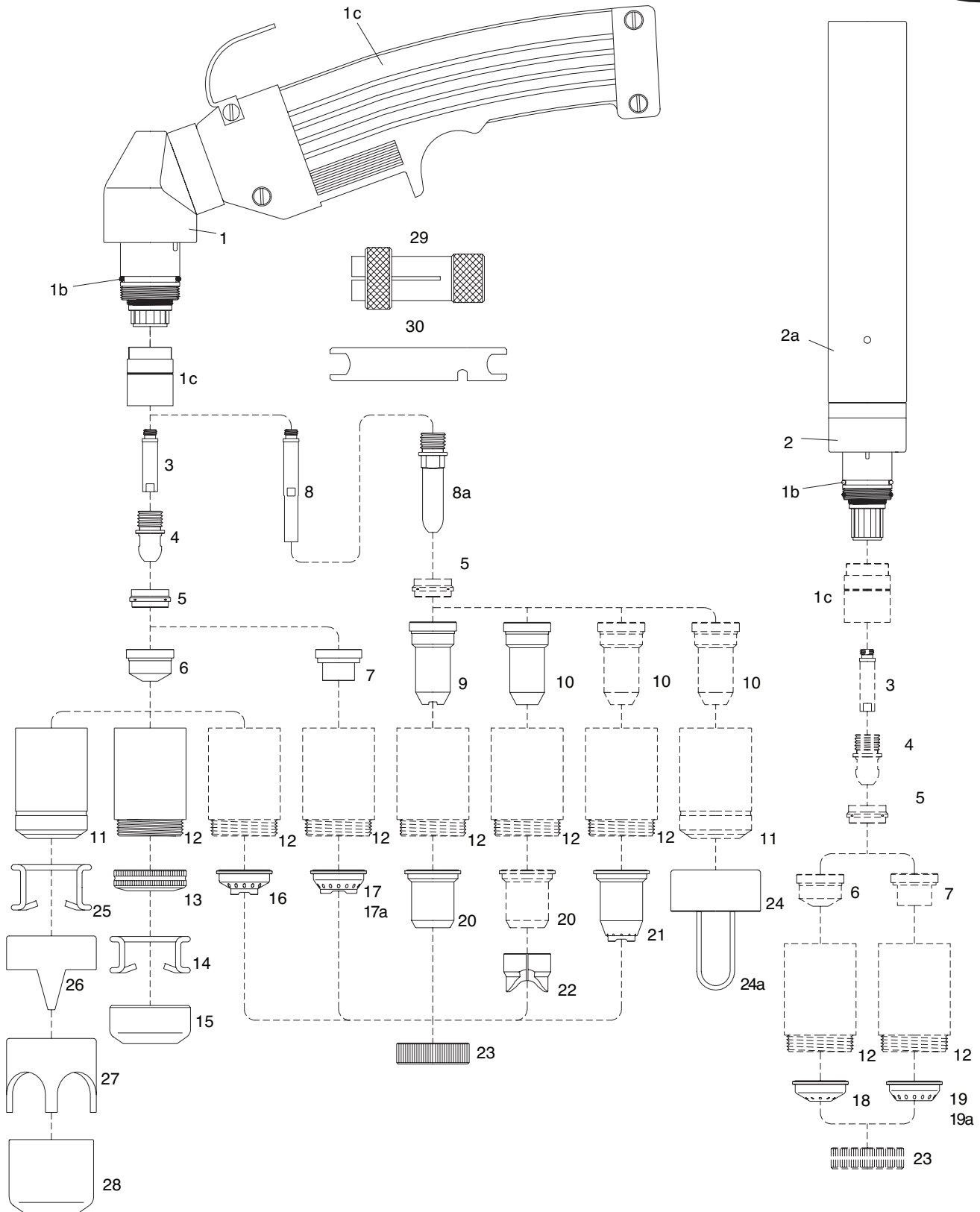


## TECMO T150 PLASMA TORCH



### Torch Model

### Description

### Part Number

6 Mt

12Mt

TecmoT150 Plasma Torch

04000

04100

# PROLINE

professional welding supplies

## Spare Parts

Item	WGA Part No.	Description
	04050/CS	Hand torch complete with 6 mts cable (1/8" connection)
	04051/CS	Hand torch complete with 6 mts cable (central connector)
	04151/CS	Hand torch complete with 12 mts cable (central connector)
	04400/S	Machine torch complete with 6 mts cable (1/8" connection)
	04401/S	Machine torch complete with 6 mts cable (central connector)
	04501/S	Machine torch complete with 12 mts cable (central connector)
1	02000	Hand torch head
1a	04280/C	Handgrip with microswitch
1b	02000.60	O - Ring
1c	60080	Front insulator
2	04300	Machine torch head
2a	03310	Machine handle
3	05004	Diffusor
4	52540	Electrode
5	60020	Swirl ring
6	51140/S	Tip long life ø 1,1
	51141/S	Tip long life ø 1,35
	51142/S	Tip long life ø 1,6
	51143/S	Tip long life ø 1,8
	51144	Gouging tip ø 3,0
7	51410	Contact tip ø 1,35
	51411	Contact tip ø 1,6
	51412	Contact tip ø 1,8
8	05005	Extended Diffusor
8a	52549	Extended electrode
9	51148	Contact extended tip max. 50A
10	51148.13	Extended tip ø 1,35 - 90A
	51148.16	Extended tip ø 1,6 - 120A
	51148.18	Extended tip ø 1,8 - 150A
11	60330	Nozzle retaining cap
12	60350	Contact nozzle retaining cap,
	60350/V	Contact nozzle retaining cap, Max.life
13	51952	Spring holder protection nut
14	51911	Spacer spring for code 51952
15	51953	Gouging spacer
16	51950	Spacer for contact cutting, hand
17	51930	Spacer for contact cutting, hand
17a	51920	Spacer for contact cutting, hand
18	51951	Shield cup, machine
19	51935	Shield cup, machine
19a	51925	Shield cup, machine
20	51957	Shield cup, hand ( max. 50A )
21	51958	Spacer for contact cutting, hand
22	51974	Spacer for extended tips High Amp
23	51959	Locking nut
24	60380	Spacer complete with springs
24a	60381	Spare springs
25	51910	Spacer spring
26	60370	Double pointed spacer
27	60371	Crown spacer
28	60373	Gouging spacer
29	60369	Extractor for swirl ring
30	60368	Wrench for electrode
	04240	Air and power cable 6 mts 1/8" - Hand torch
	04250	Air and power cable 12 mts 1/8" - Hand torch
	04320	Air and power cable 6 mts 1/8" - Machine torch
	04330	Air and power cable 12 mts 1/8" - Machine torch

Ph: 0800 699 353

sales@prolinewelding.com